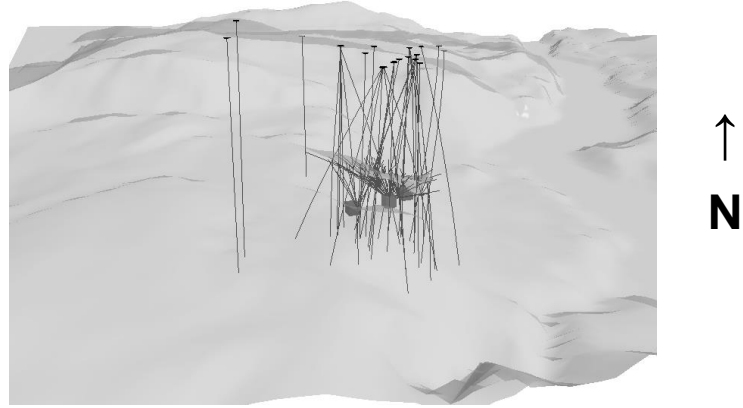


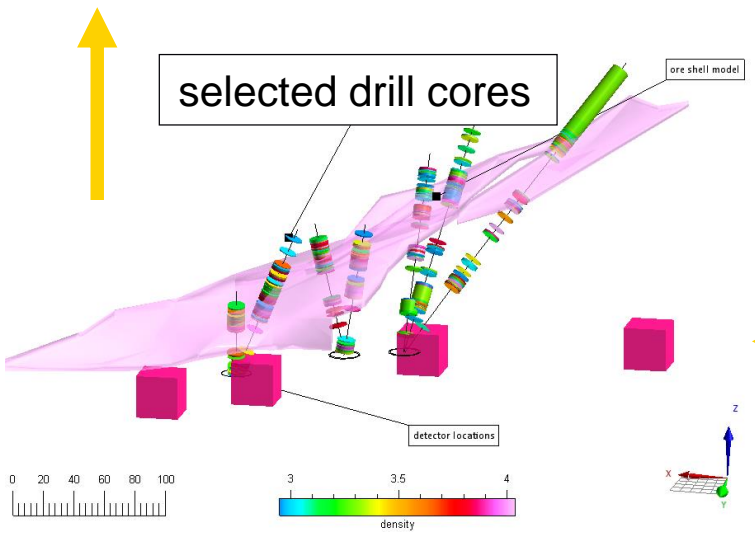
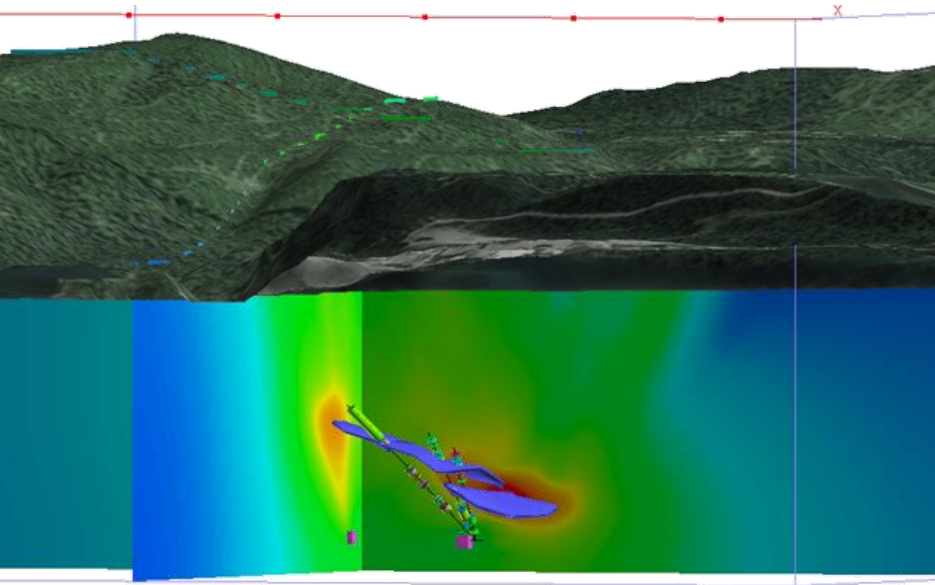
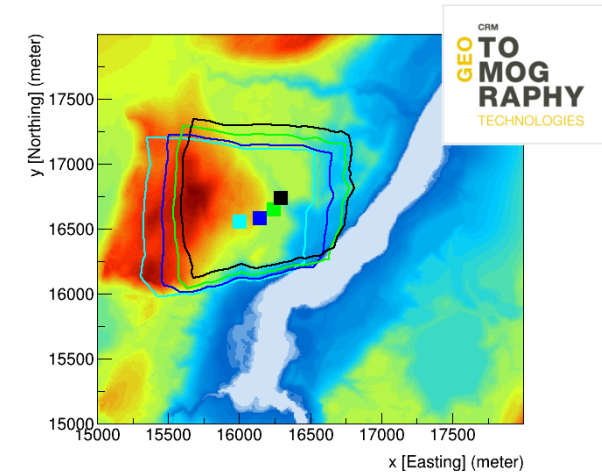
# Pend Oreille Mine, Washington, USA

- **blind** muon tomography survey of MVT lead/zinc deposit in WA, USA
- 650+ meters, four sensor locations
- extensively drilled (270+ holes) allowed verification of muon data



- combining < 5% of drill data with muon data yields compact ore shell model

**Figure:** topographic map of the surrounding area, showing the fields of view of the four sensor locations used in the survey.



Presented by Teck's chief geophysicist at:  
**ASEG-PESA 2015**  
 Geophysics and Geology together for Discovery  
 24th International Geophysical Conference and Exhibition  
 15-18 February 2015 Perth, Western Australia

Presented at:  
**AGU FALL MEETING**  
 San Francisco | 14-18 December 2015